

# *Meddah*

*for piano solo and auxiliary objects or up to two pianists and voice*

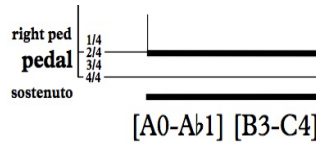
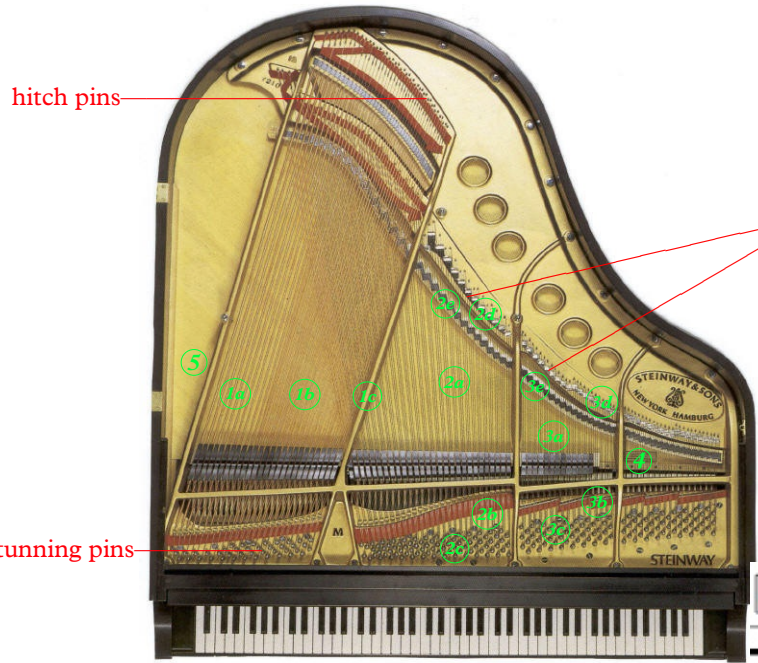


*Onur Dülger*

*2015*

© 2015 by ONUR DÜLGER  
All rights reserved

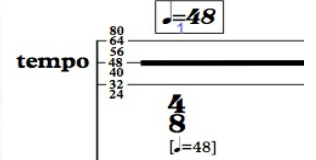
# Instructions



1/4, 2/4, 3/4 and 4/4 indicate the right pedal levels. Lines between the two line-system indicate the gradual change of the pedal-levels.  
 Note names in paranthesis, exp: [A0-A♭1], indicate which notes are held with the help of sostenuto pedal.

These indicate piano's inner areas

- H** ▮ Primary voice: this voice with this symbol should be louder in the combination with the other voices, like %60 of whole sound.
- N** ▮ Secondary voice: this voice should be quieter in the combination but present and strong enough.



Lines are indicating the metronom. The core metronoms are shown in the box above the system.  
 There are also metronoms are shown below the time signatures, which show the actual tempo in relation to the irrational time signatures.

Irrational time signatures are those which have a denominator that is not a power of two (1, 2, 4, 8, 16, 32, etc.). In this piece 10, 12 and 14 are used. For instance 5/12 means the whole note  $\ominus$  is divided to 12 but only 5 of each parts are taken. 5x 1/12. This can be understood as follows: denominator 10 is 2 large quintoles, 12 is two large sixtoles and 14 is two large septoles. In the example, an eight note in 6/8 bar becomes a eight note of a large sixtole. As an additional information, I gave the metronome mark below the time signatures.

**irato**  
**H**  
 hitch pin  
 granulation  
 (1b) regularly  
 tuning pin  
 fff  
 right hand

**Bar number 1:**  
 Right hand plays with plectrum on the E2 string which is indicated in the system below. The system above shows the location of the right hand on the vertical position of the string. "regularly" means to play that noise regularly. 1b is an extra information which indicates the location area of the hand in the piano.

**gemendo**  
 2a  
 IRregularly  
 p<sup>\*</sup>  
 left hand

**Bar number 3:**  
 Right hand applies an over pressure, indicated with a overpressure sign on the system, with the bike-inner-tube on the given string in the system below, in this case on B3 string. Because of the pressure applied, it sounds intermittent. "IRregularly" indicates this character.

**capriccio**  
**H**  
 2a regularly  
 ppp  
 p  
 pp  
 right hand

**Bar number 7:**  
 The righth hand is playing between two indicated strings with a tiny metal stick. Since those strings are also dampened with the left hand on the same strings, one will hear the harmonics while changing the position of the metal stick vertically which are also shown between the the upper systems graphically.

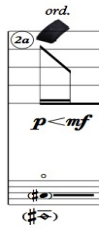
hitch pin  
 (1a)  
 [A0-A♭1]  
 tuning pin  
**N**  
 15mb  
 ff  
 left hand

**Bar number 1:**  
 A book is placed before the performance in the middle of the strings on the A0 to A♭1 strings and it is used to dampen those strings. And left hand is playing the given notes. This should give percussive sound with the occasional 1st overtones because of the position of the book.  $\phi$  this sign is used for damping.

**spiritoso**  
 8a  
 7  
 3  
 mp  
 p  
 left hand

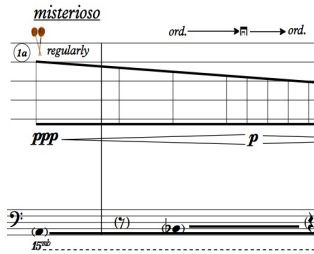
**Bar number 5-6:**  
 These are played inside the piano with a plectrum by plucking the given string. There are two kinds of plectrum. One is hard indicated with the black color and the other one is softer, indicated with green color.

- (1a) A0 -F1 with one string
  - (1b) F#1-G3 with two strings
  - (2a) G#3- with three strings
- no damper after g6



**Bar number 14:**

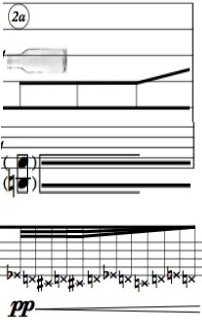
It is again played with the bike-inner-tube but with a normal pressure so that the overtones of the string will be heard.



**Bar number 38:**

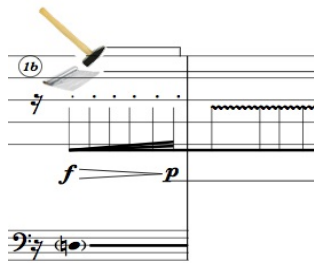
Superballs mallets are played on the given string or strings, in this case regularly and with a changing pressure.

*melancolico*



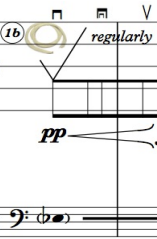
**Bar number 15:**

The left hand is playing the given notes on the keyboard, while the right hand is holding a glass bottle on the indicated notes and slides the bottle as indicated in the upper system.



**Bar number 45:**

A given string is hit with a hammer but there should be an aluminium foil on the string that hammer is not directly applied on the string. Hammer hits the strings and begins to jump gradually quicker and then it is taken from the string so that aluminium foil begins to jump on the strings as it is notated on the next bar.



**Bar number 22:**

Given string is played by both hands regularly in this case with a change of pressure and change of pulling direction.

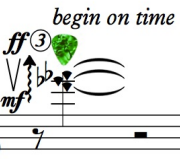
**VOICE**

- closed mouth
- open mouth
- ⊕ exhaling
- ⊖ inhaling
- air noise as by-product of whistling
- ~~~~~ Vibrato



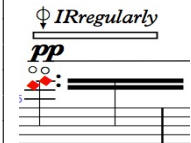
**Bar number 2:**

subharmonic is sung together with the main pitch.



**Bar number 27:**

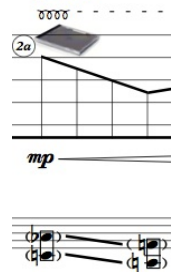
Given notes are played on the beat with the soft plectrum horizontally. Glissando is played with a crescendo from *mf* to *ff*.



**Bar number 5:**

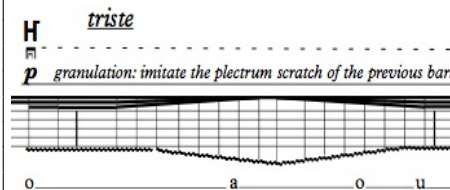
double harmonics, rarely they sound together, usually they change "IRregularly"

*feroce*



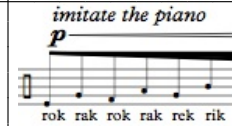
**Bar number 35:**

A CD-cover is placed on the given strings and is played according to the given position and given notes with a circular motion in this case.



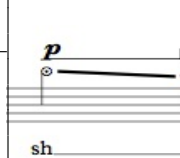
**Bar number 12:**

Granulation of voice is changed according to vowels and if the granulation gets slower, its pitch gets lower.



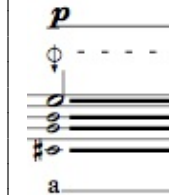
**Bar number 21:**

Tongue hits the roof of the mouth with different vowels.



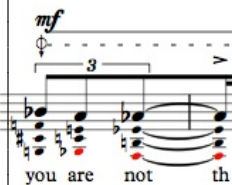
**Bar number 76:**

Different consonants are used with the position change of the sound in the mouth in order to change the color of the sound between bright and dark.



**Bar number 85:**

Inhaled multiphonic with a vowel



**Bar number 79:**

Inhaled multiphonic with words

# Meddah

for a pianist and auxiliary objects or up to two pianists and voice

1  
Onur Dülger  
2015

## esposizione alla variazione in sviluppo

The score is divided into several parts:

- tempo:** A vertical scale on the left indicates tempo markings from 24 to 80. The score starts at 48, changes to 56, and then to 84.
- Voce:** Features a vocal line with dynamics *f*, *mp* (IRregularly), *mf*, *p*, *pp*, and *pp*. It includes a vocal line with lyrics "um" and "a".
- right hand:** Includes a section for "granulation" (1b) regularly, marked *fff*. It also features a section for "capriccio" (2a) regularly, marked *ppp*, *p*, and *pp*. A "spiritoso" section is marked *mp* and *p*.
- left hand:** Includes a section for "gemendo" (2a) IRregularly, marked *p\** and *mf*. It also features a section for "15mb" *ff*.
- Piano:** Includes a section for "1a" marked *[A0-Ab1]*.
- right ped. sostenuto:** A section at the bottom marked *[A0-Ab1][G3-C5]*.

\*conditionally, dynamics can be understood as density of activity



**tempo**

80  
64  
56  
48  
40  
32  
24

**9**  
**10**

**4**  
**8**  
[♩=64]

**5**  
**8**

**4**  
**8**

*triste*

**f** *IRregularly* **ff** **p** *granulation: imitate the plectrum scratch of the previous bar!* **mf**

o a o u o a o u o a o u o a

**right hand**

hitch pin

tuning pin

**ff** 5 5 6 **fff**

*ord.* **2a** *IRregularly* **2a** *melancolico* **2a**

**p** < **mf** **p** **mf**

**Piano**

**left hand**

hitch pin

tuning pin

6

**ff** (15) **fff**

1a [A0-Ab1]

**right ped**

**pedal**

sostenuto

1/4  
2/4  
3/4  
4/4

[A1-B2]

**pp**





**tempo**

80  
64  
56  
48  
40  
32  
24

**6/8** [♩=40]      **9/10** [♩=50]      **4/8** [♩=40]      **6/14** [♩=70]      **7/8** [♩=40]

**Voice**

*imitate the piano*  
*p*      *f*  
 rok rak rok rak rik rik rok rak rok rak rik rik rik rik rik

*ppp*      *mp*      *mf*  
 a      a      (a) → um

**right hand**

*misterioso*

hitch pin      tuning pin

2a

it continues because of sos. ped. ord.

*mp*

**Piano**

*capriccio*

hitch pin      tuning pin

3a

1b regularly

*pp*      *fff*

*ppp*      "ff"      *ppp*      *p*

*sognando*

come out of the resonans of the ordinaryly played G2

regularly

1b

*pp*

**right ped**  
**pedal**  
sostenuto

1/4  
2/4  
3/4  
4/4



tempo

80  
64  
56  
48  
40  
32  
24

$\text{♩} = 56$

$\frac{4}{8}$

$\frac{8}{14}$   
[♩=98]

$\frac{10}{12}$   
[♩=84]

$\frac{8}{10}$   
[♩=70]

Voice

$\phi$  Irregularly

*mp*

*pp*

stay in the spectrum of the piano

*ppp*

*ppp < mp*

rok rak rok rak rekrikrekrikrokrokrokrokrokrekrikrekrikrik

\*om

\* 11<sup>th</sup> overtone of the C#1

i → a

\* 7<sup>th</sup> overtone of the C#1

right hand

hitch pin

tuning pin

begin on time

*ff* ③

*mf*

2a

6:4 6:4 6:4

on time

*p* ③

*pp*

1b

Piano

hitch pin

tuning pin

*f*

*melancolico*

6:4 6:4 6:4

*p*

*f*

*sonoro*  
ord.

3

15mb

*ppp*

1a

[A0-A#1]

regularly

2e

*pp*

*fff*

*p*

*ppp* *mf*

*p* *mf* *p* *mf*

*sognando*

right ped

pedal

sostenuto

1/4

2/4

3/4

4/4

3 3

3

tempo

80  
64  
56  
48  
40  
32  
24

**7**  
12  
[♩=84]

**4**  
8  
[♩=56]

**8**  
8  
[♩=48]

**6**  
10  
[♩=60]

Voice

*ff*

o u o

*strepitoso*

rhythmically

5 5 5 5 5

*feroce*

oooo

right hand

hitch pin

tuning pin

**1b**

*ff* *fff* *mp* *f* *mf* *ff*

**2a**

Piano

hitch pin

tuning pin

*fff*

tr

6

ord.

*sfz* *tr* *sfz* *tr* *sfz* *tr* *sfz* *tr*

*ff* *fff* *mf* *ff*

8<sup>ub</sup> 15<sup>mb</sup>

left hand

hitch pin

tuning pin

*fff*

**1b**

[E1-F#2]

right ped

pedal

sostenuto

1/4  
2/4  
3/4  
4/4

[E1-F#2]

♩=40

40

**tempo**

80  
64  
48  
40  
32  
24

**8/5** [♩=48]

*tranquillo* [♩=40]

*9/12* [♩=60]

*6/14* [♩=70]

*4/8* [♩=40]

**Voice**

*um*

**right hand**

*estinto*

*granulation regularly*

hitch pin (1b)

tuning pin *p*

*penseroso*

*IRregularly*

3c

5

*ppp* *pp* *ppp*

*1b* *regularly* *goes to the left hand*

*ppp* *pp*

**Piano**

*mf* *pp* *on time* *8va*

*mf*

*8va*

*ppp* *pp* *ppp*

*1a* *regularly* *ord.* *ord.*

*1b*

*ppp* *p* *ppp* *pp* *ppp*

**left hand**

hitch pin

tuning pin [E1-F#2]

5 5 5 5

*8vb* *sub.p* *mf* *f* *mp*

*15mb*

**right ped**

**pedal**

sostenuto

1/4  
2/4  
3/4  
4/4

[A1-A#2]

Detailed description of the musical score: The score is divided into five systems. The first system shows tempo markings (80, 64, 48, 40, 32, 24) and time signatures (8/5, 9/12, 6/14, 4/8). It includes a voice part with the word 'um' and a piano part with 'estinto' and 'granulation regularly' instructions, accompanied by a diagram of a hitch pin and tuning pin. The second system features 'penseroso' and 'IRregularly' with a diagram of a hitch pin and tuning pin, and dynamic markings 'ppp', 'pp', 'ppp'. The third system includes '1b regularly goes to the left hand' and dynamic markings 'ppp', 'pp'. The fourth system has 'misterioso' and '1a regularly' with 'ord.' markings, and dynamic markings 'ppp', 'p', 'ppp', 'pp', 'ppp'. The fifth system shows '1b' and dynamic markings 'ppp', 'p', 'ppp', 'pp', 'ppp'. The bottom system shows a right pedal part with 'pedal' and 'sostenuto' markings and a diagram of a sustain pedal.

♩=80

tempo

4/8 [♩=80]      4/10 [♩=100]      10/12 [♩=120]      7/10 [♩=100]

Voice

*f* *mp* granulation: imitate the plectrum scratch of the previous bar!

um u o a o u o a

*p* *f* *p*

rik rek rik rek rik rek rik rek rak rok rak rok rak rok rak rok

right hand

*H* granulation

hitch pin (1b) regularly

tuning pin

*fff* *mp*

*giocoso*

(1b) (2a) (1b) (2a)

*mf* *pp* *f* *p* *p*

Piano

*marziale*

hitch pin (1a)

[A1-A♭2]

tuning pin

*N*

5 5 5 5

*ff* *p*

*H* regularly

(2a) (1b)

*p* *mf* *f* *p* *ff* *sfz*

*lamentando*

regularly

*p* *mp*

right ped

pedal

sostenuto

1/4 2/4 3/4 4/4

tempo

80  
64  
56  
48  
40  
32  
24

**5/14** [ $\downarrow=140$ ]

**10/8** [ $\downarrow=80$ ]

$\downarrow=32$

50

**5/12** [ $\downarrow=48$ ]

Voice

right hand

hitch pin

tuning pin

*f* *p* *mf* *p* *mp* *f* *p* *mp* *f* *ff* *mp*

Piano

hitch pin

tuning pin

*doloroso*

*pp* *mp* *f* *p*

*H* regularly

*H* regularly

right ped

pedal

sostenuto

1/4  
2/4  
3/4  
4/4

3 3 3

**tempo**

80  
64  
56  
48  
40  
32  
24

$\text{♩} = 64$

**9/8** [ $\text{♩} = 32$ ]

$\text{♩} = 64$

**6/14** [ $\text{♩} = 112$ ]

**10/10** [ $\text{♩} = 80$ ]

**Voice**

*p* *mf* *ff* *rubato* *p*

*simile* *7<sup>th</sup>, 8<sup>th</sup>, 9<sup>th</sup> overtones of the B1*

**right hand**

before hitch pin (1b)

before tuning pin

*mp* *f* *ff* *magico* *ppp* *p*

**Piano**

*ritmico* *regularly* *regularly* *regularly*

hitch pin (5) (2d) (2c) (2d)

tuning pin *f* *mp* *f* *mf* *ff* *ord.* *pp*

**left hand**

**right ped**

pedal sostenuto  $\frac{1}{4}$   $\frac{2}{4}$   $\frac{3}{4}$   $\frac{4}{4}$

[A0-Ab1]

♩=40

tempo

80  
64  
56  
48  
40  
32  
24

80 [♩=64] 3 3

**N** *pp*

overtones of the B♭1

o a o u o u o

♩=40

**H** *lugubre* *p*

50 [♩=50]

**5** *pp*

overtones of the G#1

hm

60 [♩=60]

**6** *pp*

2 2 2

*dolce*

hitch pin

(1b)

tuning pin

*mf* > *mp* *f* > *mf*

hitch pin

(1b)

tuning pin

*mf* > *pf* > *mp* *mf* > *p*

right hand

**N** *capriccio* *p*

(7) (7) (7) (7) (7)

(3a)

3 6

**H** *ppp*

Piano

hitch pin

(2c)

tuning pin

**N** *regularly* *pp*

8<sup>ub</sup> *p*

1a

8<sup>ub</sup> *p*

*espansivo*

ord. → [ ] → ord. → [ ] → ord. → [ ] → ord.

(5) *regularly* | *IRregularly* | *regularly*

*p* — *mf* — *p*

1a

8<sup>ub</sup> *p* — *mf*

left hand

right ped  
pedal  
sostenuto

1/4 3/4 4/4



tempo

80  
64  
56  
48  
40  
32  
24

**9**  
**10**  
[♩=50]

**7**  
**14**  
[♩=70]

**7**  
**8**  
[♩=40]

[♩=32]

voice

*misterioso*  
**N**  
*ppp*

overtones of the G1

*ppp* *pp*

overtones of the F#1 inh:1.01

overtones of the F1 inh:1.015

right hand

hitch pin

tuning pin

*magico*  
**N**

*ppp* *pp* *p*

3a

*P* *pp*

3

**H** *solenne*

regularly

*ppp* *pp*

8<sup>vb</sup>

Piano

*spiritoso*  
**H**

hitch pin

regularly

1b

tuning pin

*ppp* *mp*

1b

*pp* *p*

right ped  
pedal  
sostenuto

1/4  
2/4  
3/4  
4/4

tempo

80  
64  
56  
48  
40  
32  
24

**8**  
**14**  
[♩=56]

**10**  
**12**  
[♩=48]

**8**  
**10**  
[♩=40]

**7**  
**12**  
[♩=48]

**6**  
**8**  
[♩=32]

*doloroso*

**N**

*pp* *ppp* *pp*

• imitate the super-ball

80

*sognando*

*p* *mf*

hm u e a

hitch pin

tuning pin

*ppp*

8

**3a**

*p* *mf*

Piano

*ritmico*

hitch pin

**1b**

tuning pin

*pp* *mp* *p* *mf*

**1b**

*8<sup>ub</sup>*

*mp*

*misterioso*

*f*

right ped  
pedal  
sostenuto

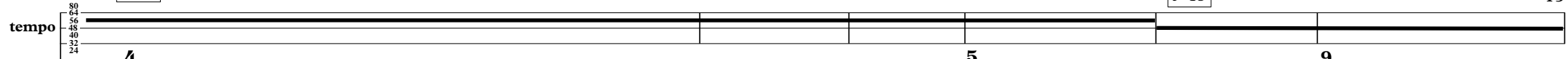
1/4  
3/4  
4/4

♩=56

70

♩=48

15



**4**  
8  
[♩=56]

**5**  
8  
[♩=56]

[♩=48]

**9**  
12  
[♩=72]

**N**  
*f* pitch is not fixed, take a comfortable one and try to fit into spectrum of the piano

*mp* *I*regularly *mf* *p* *pp*

um (um) a

*feroce*

**H**

granulation

(1b) regularly

hitch pin

tuning pin

*fff*

*religioso*

**2a**

regularly

*p* *mf*

right hand

Piano

left hand

right ped

pedal

sostenuto

[A0-A♭1][B3-C40-E4-B♭4]

*spiritoso*

**8va**

*mp* *p*

adagio alla Sarabanda

tempo

80  
64  
56  
48  
40  
32  
24

**3**  
**4**  
[♩=48]

**3+1**  
**4 16**

**3**  
**4**

Voice

N  
*pp*

N  
*p* *mp*

N  
*p* *mf*

sh

s (s) 4 sh

hitch pin

tuning pin

right hand

2a IRregularly

*sfzsp*

3a

*mf*

*sfzsp* *mf*

*sfzsp* *f* *p*

Piano

hitch pin

1a regularly

tuning pin

left hand

*ppp*

*pp*

*p*

*mp*

*mf*

1a

*pp*

*p*

*mp* *p*

1b 3

*mf* *mp*

*f* *mf*

right ped  
pedal  
sostenuto

1/4  
2/4  
3/4  
4/4

tempo

80  
64  
56  
48  
40  
32  
24

3+1  
4 8

3  
4

3+ 3  
4 16

3  
4

mp

p

f

f

mf

Voice

a

f s sh

a

f s sh s f s sh

a

♩=80

right hand

hitch pin

(2a) IRregularly

tuning pin

sfzsp

f

f

(3a)

sfzsp < ff > p

sfzsp

ff

(4)

sfzsp

ff

ord. regularly IRregularly simile

p

Piano

hitch pin

(2a)

tuning pin

ff

mf

ff

p

mp

f

mf

p

(3a)

sfzsp < f > p

sfzsp

mf

p

(4)

sfzsp < mf > p

sfzsp

mf

p

left hand

hitch pin

(2a)

tuning pin

ff

mf

ff

p

mp

f

mf

p

(3a)

ff mf < ff

mf

sp

sfz

sfzsp

mf

p

(4)

sfzsp < f > p

sfzsp

mf

p

(1a)

tuning pin

ff

mf

ff

p

mp

f

mf

p

(3b)

ff mf < ff

mf

sp

sfz

sfzsp

mf

p

(4)

sfzsp < mf > p

sfzsp

mf

p

right ped

pedal

sostenuto

1/4

2/4

3/4

4/4

tempo

Voice

right hand

Piano

right ped

pedal

sostenuto

♩=40

90

tempo

$4 + \frac{1}{4}$   
16

$\frac{3}{4}$

Voice

*gemendo*

right hand

Piano

*irato*

left hand

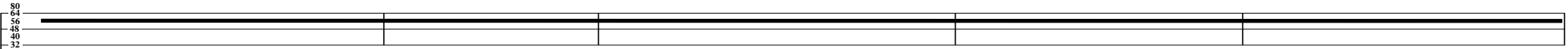
Piano

right ped  
pedal  
sostenuto

[A0-C3][C#4-C#5]



tempo



$\frac{5}{4}$

$\frac{3}{4}$

$\frac{4+1}{4}$   $\frac{1}{16}$

$\frac{3}{4}$

$\frac{3+3}{4}$   $\frac{3}{16}$

$[\text{♩} = 56]$

Voice

Dynamic markings: *p*, *mp*, *mf*, *sp*, *f*

Vowels: a, a, a, f, sh

right hand

hitch pin

tuning pin

Dynamic markings: *p*, *mp*, *mf*, *f*, *gemendo*, *mp*, *f*, *mf*, *ff*

Piano

hitch pin

tuning pin

Dynamic markings: *feroce*, *p*, *mf*, *f*, *mp*, *mf*, *sp*, *sfz*, *15<sup>mb</sup>*

Performance instructions: *2a*, *1a* IRregularly

right ped

pedal

sostenuto



$\text{♩} = 40$

100

tempo

80  
64  
56  
48  
40  
32  
24

$\frac{3}{4}$  [ $\text{♩} = 40$ ]       $\frac{3+1}{4}$   $\frac{8}{8}$        $\frac{3}{4}$        $\frac{3+1}{4}$   $\frac{16}{16}$        $\frac{3}{4}$

Voice

*p*      *p*  $\rightarrow$  *mf*      *mf*      *p*  $\rightarrow$  *mf*      *f*

a.      s      you are      rrrr      the      en      tire      o      cean      in a drop

left hand

hitch pin

tuning pin

*p*  $\rightarrow$  *mf*      *mp*  $\rightarrow$  *f*  $\rightarrow$  *ff*

*gemendo*

*Irregularly*      *regularly*

Piano

hitch pin

tuning pin

*mp*      *mf*      *mp*  $\rightarrow$  *f*  $\rightarrow$  *ff*

*furioso*

*Irregularly*      *regularly*

right ped

pedal

sostenuto

$\frac{1}{4}$   
 $\frac{3}{4}$   
 $\frac{4}{4}$

**scherzo**

$\text{♩} = 64$

105

22

tempo

8/8 [♩=64]      6/8      4/8      7/8

Voice

N  
mp  
p regularly  
mf pp

right hand

hitch pin  
tuning pin

*sonoro*  
let vibrate  
ff

1a 2a

7

let vibrate  
ff

1a 2a

let vibrate  
ff

Piano

8<sup>ub</sup>

left hand

hitch pin  
tuning pin

*misterioso*  
mp pp mp

*melancolico*  
mp pp mf

right ped  
pedal  
sostenuto

1/4 2/4 3/4 4/4

[A0-C1]

tempo

80  
64  
48  
32  
16

**3/8**      **6/10** [ $\downarrow=80$ ]      **6/8** [ $\downarrow=64$ ]      **4/8**      **6/10** [ $\downarrow=80$ ]

Voice

*f* *f* *f* *mp* *p* *mp*

$\uparrow$  regularly

N

um → a → um      um

*luminoso*

*eroico*

right hand

hitch pin

tuning pin

*ff* *fff* *ff* *ff* *ff*

1a 1b 2a

et *vibrate* *let vibrate*

3

8<sup>vb</sup>

left hand

hitch pin

tuning pin

*misterioso*

*melancolico*

*f* *mp* *pp* *mp* *mp* *pp* *mp*

8<sup>vb</sup>

right ped

pedal

sostenuto

1/4  
2/4  
3/4  
4/4



♩=56

♩=40

120

tempo

80  
64  
56  
48  
40  
32  
24

7/14 [♩=98]    6/8 [♩=56]    5/8 [♩=40]    9/8

mp → p    pp → mp → p → mf → pp    H granulation pp → mp → f

voice

u o a i a o u o i o u

*insistendo*

hitch pin

2a

right hand

tuning pin

1b *ritmico*    2a

p    mf    p    p    ff

Piano

hitch pin

H regularly

tuning pin

1a    1b    2a

ppp → "ff" → ppp    mf    pp    p    p    3    3    3    5    5    5    5    ff

right ped  
pedal  
sostenuto

1/4  
3/4  
4/4





tempo

80  
72  
64  
56  
48  
40  
32  
24

12/8      6/8      7/8      8/8      9/8

Voice

pp      p

*sognando*  
regularly      Irregularly

*gemendo*

*furioso*

right hand

hitch pin

tuning pin

3a      mp      p

1b      p      mf

2a      mp      f

2a      mf      ff      mp

Piano

hitch pin

tuning pin

left hand

1a      mp      mf      f      mp      mf      f

8<sup>vb</sup>      8<sup>vb</sup>      8<sup>vb</sup>

right ped  
pedal  
sostenuto

1/4  
3/4  
4/4



tempo

80  
64  
56  
48  
40  
32  
24

15/8      4/8      5/8      3/8      4/8      12/8

Voice

*f*      *p*      *f*      *p*      *mf*      *f*

rok rak rok rak rek rik rek rik rok rak rak    rokrakrek rikrebrikrek rik rek rakrokrakrokrak    rok rak    rok rak rek rik rek rik rek rek rok rak rok rak rok rak    rok

right hand

hitch pin

tuning pin

*f*      *p*

15ma

*mp*      *f*

3      7      3

Piano

left hand

hitch pin

tuning pin

1b

*f*      *mf*      *f*

3

right ped

pedal

sostenuto

1/4  
2/4  
3/4  
4/4

[G#3-F5#5]

tempo

8/8      10/8      9/8      3/8      8/8      4/8      7/8      5/8

Voice

*p*      *pp*      *p*      *mp*

e      a      o

right hand

hitch pin

tuning pin

loco

Piano

*fpp*      *f*      *mp*      *p*      *mp*      *mf*      *f*

15<sup>ma</sup>

left hand

hitch pin

tuning pin

*urlo silenzioso*

*fff*      *f*      *ppp*      *mp*      *pp*      *mf*      *p*      *f*

*urlo silenzioso*

right ped

pedal

sostenuto

1/4  
2/4  
3/4  
4/4



tempo

Voice

*p* *f* *pp* *mp*

f sh f sh f

right hand

hitch pin

tuning pin

Piano

*p* *mp* *ppp* *mf*

3 7 3 3

regularly

2e

*p* *ff*

15<sup>ma</sup>

left hand

hitch pin

tuning pin

*pp* *mf* *p* *f*

regularly

2c

15<sup>ma</sup>

*ppp* *mf*

*ff*

right ped

pedal

sostenuto

1/4 2/4 3/4 4/4

tempo

Voice

right hand

hitch pin

tuning pin

left hand

hitch pin

tuning pin

right ped

pedal

sostenuto

tempo ♩=80

Voice *p* *ppp*

**N** regularly

right hand *mp* *pp*

Piano **H** *sfz* *sfz* *sfz* *sfz* *sfz* *8vb*

**N** regularly

left hand *mp* *pp*

**H** *sfz* *sfz* *sfz* *sfz*

right ped *1/4* *3/4* *4/4*  
pedal  
sostenuto



finale esposizione alla variazione in sviluppo

170

175

35

tempo

$\text{♩} = 48$

$\text{♩} = 56$

$\frac{5}{12}$

[♩=84]

$\frac{5}{8}$

[♩=56]

Voice

N  
f

mp

*I* regularly

mf

p

$\phi$  *I* regularly

p

um

a

*irato*

(1b)

H granulation

regularly

hitch pin

tuning pin

fff

right hand

15<sup>ma</sup>

(4) *spiritoso*

mp

mf f

Piano

*misterioso*

(2a) regularly

p

mf

left hand

N

15<sup>mb</sup>  
ff

right ped  
pedal  
sostenuto

[A0-Bb2][G3-C5]

tempo

Voice

right hand

hitch pin

tuning pin

2a

come out of the resonans of the piano

regularly

p

Piano

hitch pin

tuning pin

1a

melancolico

sonoro ord.

fff

sub. mp

f mp

right ped

pedal

sostenuto

**tempo**

80  
64  
56  
48  
40  
32  
24

**4/8** [ $\text{♩} = 56$ ]

**8/8** [ $\text{♩} = 48$ ]

**6/10** [ $\text{♩} = 60$ ]

**4/8** [ $\text{♩} = 48$ ]

**6/8**

**Voice**

*f* *ff* *mf* *f* *mp*

*doloroso*

*pp*

*pp*

• imitate the CD-cover

*N*

*N*

overtones of the E<sub>b</sub>2

**right hand**

*strepitoso*

*rhythmically*

5 5 5 5 5

1b

*feroce*

2a

come out of the resonans of the piano

3 3

*ff* *fff* *mp* *f* *mf* *ff* *mp*

**left hand**

*tr*

6

ord.

*sfz* *tr* *sfz* *tr* *sfz* *tr* *sfz*

8<sup>mb</sup> 15<sup>mb</sup> 4

*ff* *fff* *mf* *ff*

**right ped**

1/4 2/4 3/4 4/4

**pedal**

sostenuto

[E1-F#2]

*sfz* *sfz* *sfz* *sfz* *sfz* *sfz* *sfz*

♩=48

♩=40

190

♩=80

tempo

80  
64  
56  
48  
40  
32  
24

8/8 5/8 4/8 7/8

*tranquillo* [♩=40]

φ I regularly

*p*

um um u o a o u o a

ppp *f* *mp*

granulation: imitate the plectrum scratch of the previous bar!

*estinto*

hitch pin

granulation regularly

(1b)

tuning pin

*p*

on time

*mf* *pp*

8<sup>sub</sup>

Piano

H granulation

(1b)

regularly

*fff* *mp*

8<sup>sub</sup>

*mf*

hitch pin

(1b)

tuning pin

[E1-F#2]

*pp* *mf* *pp*

5 5 5 5

8<sup>sub</sup> sub. *p* *mf*

come out of the resonans of the piano

*marziale*

(1a)

[A1-A#2]

N

5 5 5 5 5

8<sup>sub</sup> *ff* *f* *sfz*

right ped

pedal

sostenuto

1/4 3/4 3/4 4/4

[A1-A#2]

tempo

4/8 [♩=80] 5/8 [♩=56] 6/8 [♩=56] 8/8 [♩=56]

Voice

come out of the resonans of the piano

right hand

Piano

left hand

right ped  
pedal  
sostenuto

tempo

80  
64  
56  
48  
40  
32  
24

8

voice

*p*

N

regularly

hitch pin

3d

3e

3d

3e

right hand

tuning pin

*mp*

H

*sfz*

*sfz*

*sfz*

*sfz*

*sfz*

*sfz*

8<sup>vb</sup>

Piano

hitch pin

2b

regularly

2c

2b

tuning pin

*mp*

H

*sfz*

*sfz*

*sfz*

*sfz*

*sfz*

*sfz*

right ped  
pedal  
sostenuto

1/4  
3/4  
4/4

♩=80   ♩=56

205 ♩=80

tempo

4/8   8/8   4/8

Voice

hitch pin

right hand

tuning pin

*pp*   *mp*   *f*   *ff*

gemendo

regularly

hitch pin

left hand

tuning pin

*pp*   *mp*   *f*   *ff*

mf

right ped

pedal

sostenuto

1/4   2/4   3/4   4/4